




DIMMER SWITCH

These simple instructions will help guide you through the setup process for your new iDevices Dimmer Switch.

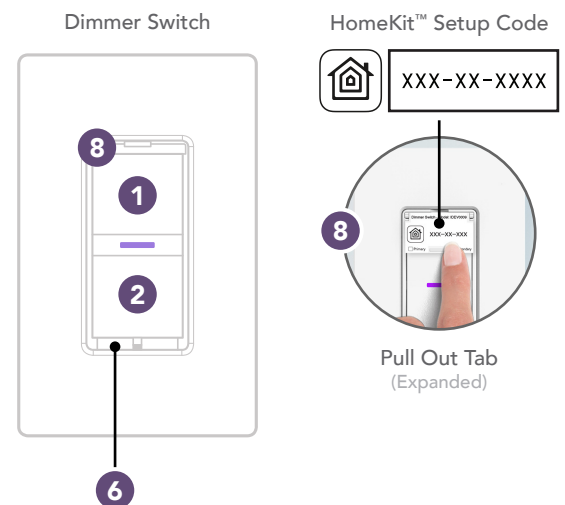
BEFORE STARTING:

- iDevices products work on most home Wi-Fi networks. To learn more about network compatibility, visit our support site. [Network Compatibility >](#)
- Please confirm all products are physically controlling a light. If you come across a product that is not controlling a light, it may be part of a 3 or 4-way setup and may simply require pairing to be completed. Please contact our Customer Experience team if any of your products are not working as expected.
- If you have a 3 or 4-way setup, please locate the Primary Dimmer Switch by looking for the check box marked as "Primary" on the pull out tab **8**, which is located above the rocker switch.
- Download the latest iDevices Connected app to start your setup process:




- **Note:** If your household uses both iOS and Android™ devices, the setup should first be performed on an iOS device. Once you are ready to pair with your Android™ device, put the product into pairing mode using the same steps below for "Connecting to the Wireless Network"

CONNECTING TO YOUR WIRELESS NETWORK AND THE IDEVICES CONNECTED APP

1. On the Primary Dimmer Switch press and hold **6** for 3 seconds and release when the LED rapidly flashes blue. Next Tap **2** to begin the Wi-Fi® connection process.
2. Launch the iDevices Connected app. If this is your first iDevices product, you will be guided through the process of adding a product and setting up a home. If this is not your first iDevices product, tap the menu in the upper right corner to select Add Product. For iOS devices, you will need the HomeKit™ setup code on the pull out tab **8** of your Primary Dimmer Switch.



iOS SETUP:

1. Launch the iDevices Connected app.
2. You will be guided through the remaining steps to finish setting up your product.

ANDROID SETUP:

1. Launch the iDevices Connected app.
2. Tap on the three lines in the upper right-hand corner.
3. Tap Add Product.
4. If there are multiple products in the home, you will see a list of the available products, based on proximity to your mobile device.
5. Tapping on a product in this list will cause it to blink purple to identify itself.
6. You will be guided through the remaining steps to finish setting up your product.

HOME SHARING

The iDevices app allows for sharing your home and products with others. To learn more about home sharing for iOS and Android, visit our support site. [Home Sharing on iOS >](#)

[Home Sharing on Android >](#)

The iDevices Connected App has advanced features to help you get the most out of your product such as scheduling, Scenes, Siri voice control and customization tools. [Learn About iDevices Connected >](#)

VOICE ASSISTANTS

AMAZON ALEXA:

1. In Settings of the iDevices Connected app, tap "Enable Amazon Alexa."
2. Tap "Get Started" and follow the steps to set up your Amazon Account.
3. Once those steps are completed, open the Amazon Alexa App.
4. Tap the menu button and navigate to "Skills."
5. Type in "iDevices" and enable.

GOOGLE HOME:

1. In Settings of the iDevices Connected app, tap "Enable Google Assistant."
2. Tap "Get Started" and follow the steps to set up your Amazon Account.
3. Once the products are linked, you will be directed to the Google Home app to complete the setup.
4. In the Google Home app, navigate to the Menu and select "Home Control."
5. Choose + and tap on "iDevices" in the list.
6. Select "I'm Done, Continue With Setup" to sign in with the Amazon Account the product is linked to and complete the setup.

For more detailed information on setting up and controlling your products through voice assistants, visit our support site: idevicesinc.com/support/dimmer-switch/



iDevices is a proud member of the Hubbell family.